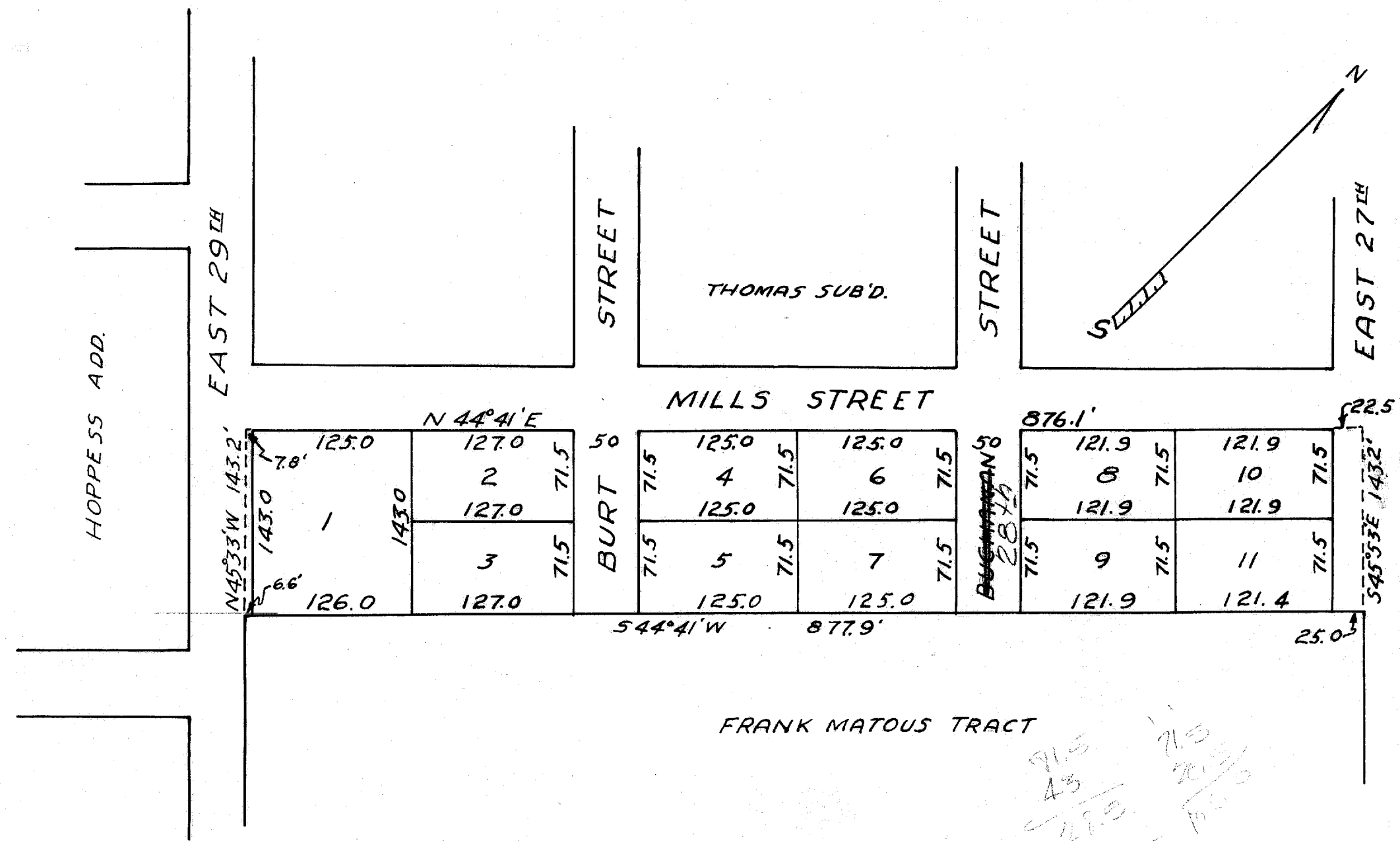


on land area
 WD 4/17/62



H.F. JONES SUBDIVISION
 D/R VOL. 146 PAGE 381
 1950
 SCALE: 1" = 100'

Handwritten calculations:

$$\begin{array}{r} 71.5 \\ 43 \\ \hline 27.5 \\ 75 \end{array}$$

$$\begin{array}{r} 71.5 \\ 20.5 \\ \hline 92.0 \end{array}$$

320